

# PROCONTROL® AutoPay 40

## Coin-operated paying machine



AutoPay 40 is a paying machine which ensures about 1500 passes without the need of the operator, so it can be placed in high traffic areas. It accepts coins, gives change and prints tickets according to its settings.

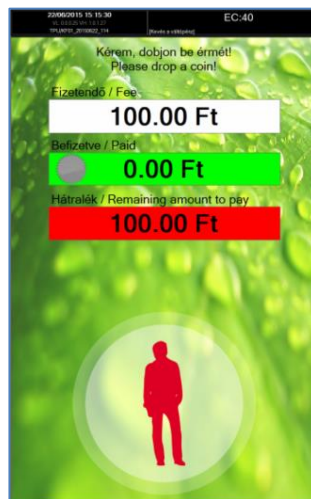
### Technical features

Type:	<b>AutoPay 40</b>
Bank note handling:	optional
Coin counting, accepting	Accepts different coins, it accepts HUF, optionally can be set to EUR too. e.g. 50, 100, 200Ft, 1EURO, 2 EURO
Gives change	Gives change, by default in 50 and 100 HUF coins. May be set to give change in EUR
Prints receipt, ticket	Thermal printer, delivered with 1pc 43 m long 60/60/12 mm (W/dia./reel) thermal paper roll, which keeps content for 8 yrs. and enough for about 400 tickets/ receipts
Paper cutter (Guillotine 95%)	✓
8" touchscreen	✓
NFC RFID (proximity) chip card	✓

reader	
Barcode reader	optional
Magnet strip (bankcard) reader	-
Banknote container:	optional
Capacity of banknote container	~ 500 pcs
Coin container	Steel cassette
Capacity of coin container	~ 1500 use with one clearing
User detection	optional
Sensor	at 2 spots in ProxerGate turnstile
Camera	-
Interface	optional (RS-485, Ethernet, RS-232)
Design	indoor, can be integrated with turnstile, can be wall-mounted
Lock:	1 pc
Power supply:	12V DC, 10A
Power consumption:	Approx. 0,8 W / hour, at issuing 250 tickets/ day
Environmental temperature resistance	from -20 C° to +60C°, at storage from 0C° to +40C°
Rel. humidity	Max. 80%, (not moisture condensation)
Basic design	RAL9003 signal white fiberglass, with brushed stainless steel and with powder-coated housing

## AutoPay40 user guide

This is the welcome screen of the display.



### 1. Insert the sum into the coin slot

On the touchscreen you can see the amount already paid in and the sum still to be paid

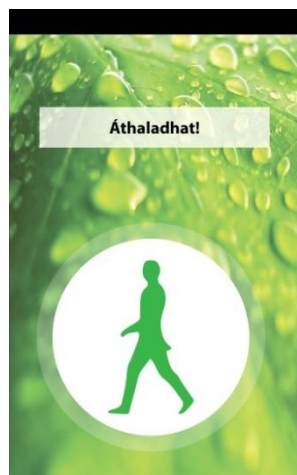
2. At overpay, get the change from the slot.



3. Wait for the printed receipt  
(At machine types with printer)



4. If integrated with turnstile, when the green signal appears on the touchscreen, pass through the gate



## For operating the machine, you will need:

- Thermal paper for printing
- Change (coins)
- Power supply (12V, UPS)

## Highly recommended:

- Internet connection for software upgrades and remote service

## Service Menu

You can access the operator, administrator functions and commands from the Service menu.



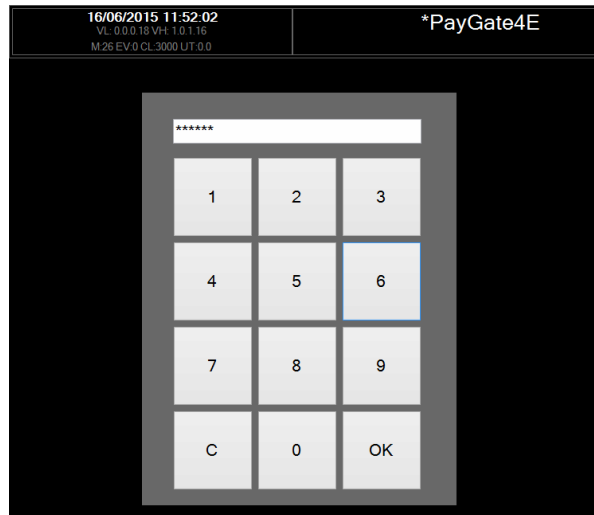
Szerviz menü  
Üdvözlöm!

BA Kilépes a szerviz menüből	CE Hiba törlés	SY Adat szinkron 01/01/0001 00:00:00
F0 Feltöltés indítás	FE Feltöltés leállítás	<input type="checkbox"/> Részletes kimutatás nyomtatás (több méteres bizonylat is lehet) <input type="checkbox"/> Nyomtatás képernyőre.
E2 Ürítés a pénzkazettákból	Részleges ürítés. A kezettk tartalmát ki lehet vanni Periódikusan ajánlott művelet NV9, Kazetta stb.	ST Státusz nyomtatás
E3 Váltópénz ürítése a kiadónyílásba	Figyelem! Visszaadó eszközök kiadnak minden érmét. Hopper,CF690	FM Forgalmi kimutatás, előző hónap
E1 Ürítés a pénzkazettákba	Visszaadó eszközök a belső kazettába továbbítják a címleteket. Csak SMART hopper és PayOut	FJ Forgalmi kimutatás jelenlegi hónap
EA Teljes ürítés	<input type="checkbox"/> Debug ON	FA Forgalmi kimutatás mai nap
KL Lowlevel restart	EX Kilépes a programból	ER Vész nyitás menü
LU Live Update	SE Start Explorer	S2 Menü 2 ->

Süti cookie KFT Szeged garázs 400-500-650

**Accessing the Service menu happens in the following way:**

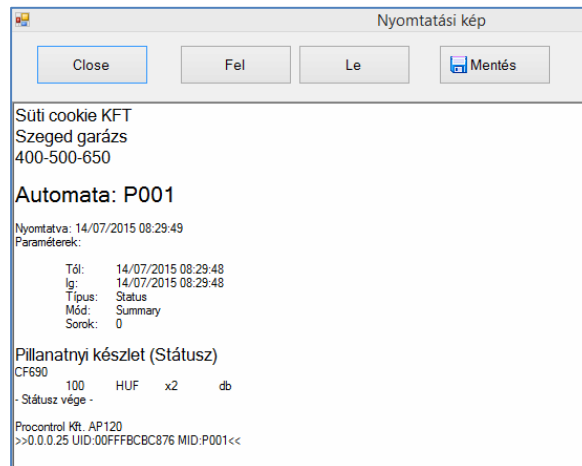
- Admin proximity card: hold the proximity card to the RFID/ NFC reader at the upper right corner of the machine
- PIN code: Double tap on the clock in the upper left corner of the screen, and enter the PIN in the window popped up and tap OK. There are two distinct PINs for the service menu – with the shorter one you may access the green options, with the longer one you can access the entire service menu.

**Menu:**

- BA Logging off the Service menu: you can get back to the welcome screen
- CE Deleting error: deletes error message displayed on the welcome screen
- F0 Start loading cash storage: refilling the machine with change
- FE Stop loading cash storage: refilling stops, receipt will be prepared
- E2 Emptying storage boxes: unloading the storage boxes partly, regular unload is suggested. Receipt is prepared, and then you have to unload the storage.
- E3 Empty change into the repayment port: It may happen that more coins get disbursed than the capacity of the repayment port – pay attention during the emptying process, and clear the port continually. Otherwise, the coins may push the protective glass to the house of the machine and the port becomes inaccessible.
- EA Start complete emptying of the cash storage: from the common storage and optionally the banknote container you take off the money, the machine itself unloads the rest.

After the complete clear off the storage do not forget to refill the storage with change so the machine would be able to give change.

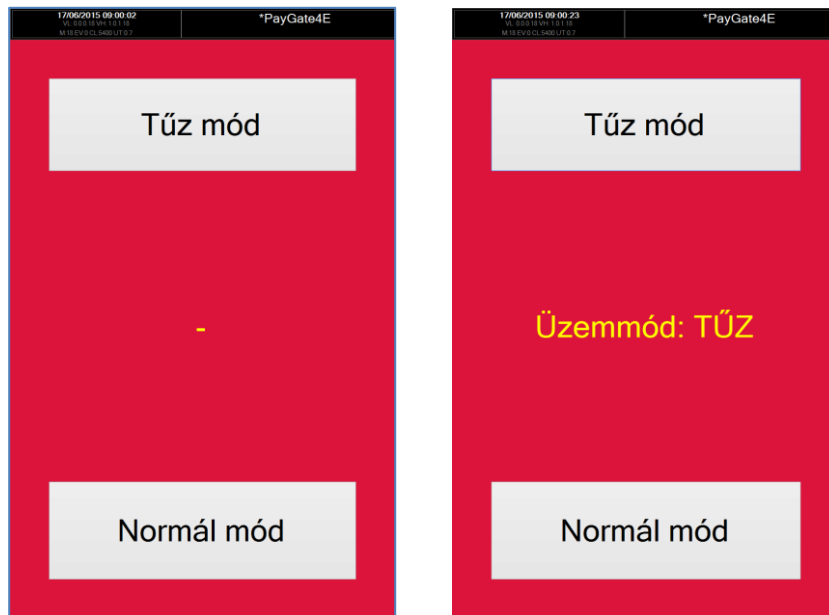
- SY Data synchronization: synchronization with the central database server (optional)
- Printing detailed report: Marking this option any report gets printed in a detailed version. (Before printing please check the paper roll, as this report might be some meters long.)
- Printing to screen: Marking this option, the result of any report appears on the display only. The print preview can be saved in .rtf format with tapping the Save button.



- ST Printing status: printing summation per denomination
- FM Turnover statement, previous month
- FJ Turnover statement, current month
- FA Turnover statement, current day
- LU Live Update: reload at active Internet connection. Wait until the welcome screen appears again.
- KL Low level restart: restart
- EX Exit from the program
- SE Start Explorer: Launch Windows file manager in the background
- ER emergency opening menu: one arm of the turnstile can drop down in case of emergency. To have the arm dropped tap the Fire mode, and the turnstile rotates its arms to the suitable position and drops the arm to ensure free exit.

After the emergency opening, fold back the arm dropped, and tap the Standard mode button to get back to the welcome screen.

You may read more on the ProxerGate turnstile in its own documentation. The gate can be connected to fire alarm system and drop its arm to a signal from the alarm system.



- S2 Menu 2: the second part of the service menu with further options

## Service menu 2

In the Service menu 2 you can get to further functions and commands to fulfill operator, administrator tasks.

**Szerviz menü 2**

SV Szerviz menü 1
BA Kilépés a szerviz menüből
OS Keyboard

TV TeamViewer

**Dátum és idő módosítás**

Óra	Perc	Másodperc	Év	Hónap	Nap
+	+	+	+	+	+
12	50	49	2015	7	21
-	-	-	-	-	-

Beállít
21/07/2015 12:50:49
Mégsem

**Kapunyitó kártyák**

Kártyaszám:

<- Hozzáad

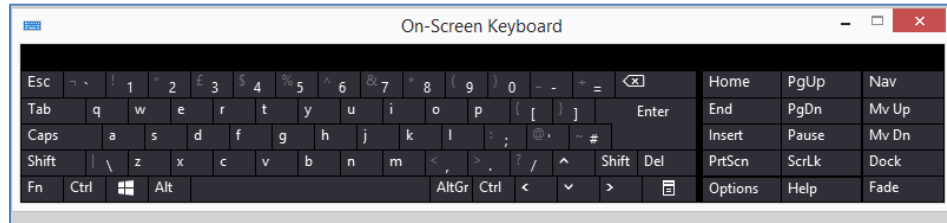
Használhatja az olvasót is, akkor nem kell beírni a számot.

Töröl

PROCONTROL ELECTRONICS LTD.

**Menu:**

- SV Service Menu 1: back to the Service Menu
- OS Keyboard: keyboard appears on the screen



- TV TeamViewer: for remote control
- Modifying date and time: with the '+' and '-' buttons set the current time, and tap the Set button. In case you do not wish to finalize the time setting, tap the Cancel button, and the time is set back to the last saved status.
- Access cards: The proximity cards/ bracelets for employees can be registered here. Type in the card number to the Card number field with the keyboard or use the reader of the machine. Then tap the Add button.  
Choosing a card number and tapping the Delete button you may delete a card you do not wish to use anymore.